

KNOW YOUR FESTIVAL

Christmas

Christmas is an annual festival celebrated on the 25th of December. Traditionally, it is a Christian festival which celebrates the birth of Jesus Christ.

In Singapore, Christmas is a time when buildings and malls are dressed up in festive decorations, with celebrations amongst families and friends involving gift exchanges and feasting.

CHRISTMAS TRADITIONS

Christmas trees are one of the more popular symbols of the festival and can be found both indoors and outdoors as decorations.



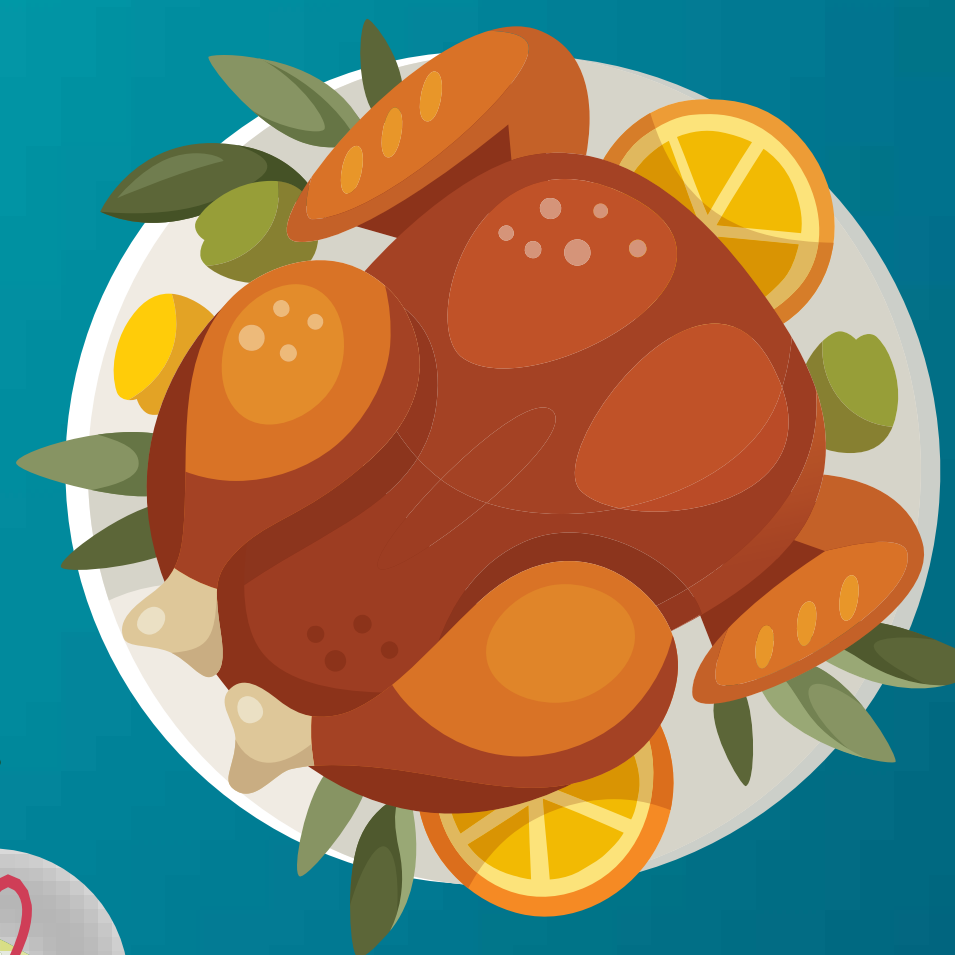
Christmas carols are sung in churches and public places to usher in the festival.

Gift exchange is a popular practice among family members and friends. Some practise the opening of gifts at midnight on Christmas Day.



TRADITIONAL DISHES

Traditional dishes differ across countries which celebrate Christmas. Here are some traditional dishes consumed during Christmas in different countries.



Roast turkey:
A Christmas classic, usually served with various dressings and sauces.



Yule log cake:
A sponge cake resembling a miniature Yule log



Christmas fruit cake:
A popular dessert which usually contains raisins and other sweet fruits.

References

1. Vasu, S. (1999). Christmas rites and rituals. Singapore Infopedia. Retrieved from http://eresources.nlb.gov.sg/infopedia/articles/SIP_868_2005-01-25.html (26 Jun 2019)
2. Gulevich, T. (2003). Encyclopedia of Christmas and New Year's celebrations. Detroit, Mich.: Omnigraphics. (Call no.: R 394.261 GUL-(CUS))
3. McLaughlan, D. (2012). Top 40 traditions of Christmas. Uhrichsville: Barbour Books.